



MW4

Ultrasound-Guided Thoracentesis Simulator

MW4A

Ultrasound-Guided Thoracentesis Simulator - Strap-on set -

MW15

Ultrasound-Guided Pericardiocentesis Simulator

MW17

Ultrasound-Guided Thoracentesis/ Pericardiocentesis Simulator

Product Supervision

Takahiro Amano, M.D.
 Vice President
 Senior Vice-Dean, Postgraduate School
 Professor and Director, Center of Postgraduate Medical Education
 International University of Health and Welfare
 Honorary Director, Sanno Medical Center



SKILLS Thoracentesis

- | Patient positioning
- | Recognition of anatomical landmarks by ultrasound
- | Assessment of level and volume of pleural effusion
- | Determination of insertion site
- | Needle insertion and collection of fluid

SKILLS Pericardiocentesis

- | Patient positioning
- | Visualization of pericardial fluid under ultrasound scanning
- | Landmark palpation
- | Needle insertion to the pericardial space
- | Aspiration of pericardial effusion

DESCRIPTIONS

SET INCLUDES

	MW4	MW4A	MW15	MW17
1 adult chest model	✓		✓	✓
1 mid-axially line unit	✓	✓		✓
1 mid-scapular line unit	✓	✓		✓
1 pericardiocentesis unit			✓	✓
1 pillow for positioning	✓		✓	✓
1 explanation model for thoracentesis	✓		✓	✓
1 instruction manual	✓	✓	✓	✓

Accessories

	MW4	MW4A	MW15	MW17
1 irrigator	✓			✓
1 funnel	✓	✓		✓
1 syringes (50ml)	✓	✓	✓	✓x2
1 joint hose			✓	✓
1 tube with three-way stopcock	✓	✓		✓
1 plastic jar	✓	✓		✓

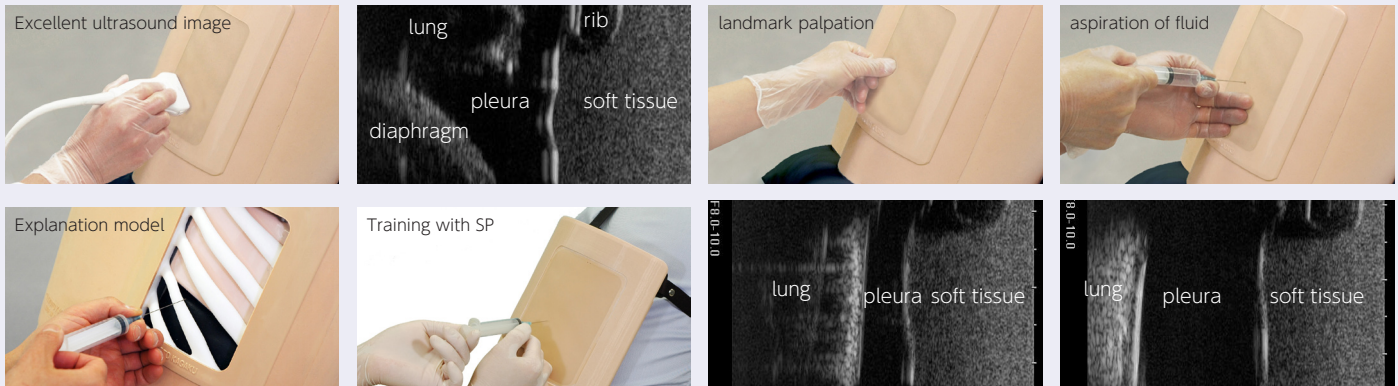
Thoracentesis

Simulate thoracentesis on both a torso and SP

Ultrasound-Guided Thoracentesis Simulator features two types of puncture units: mid-scapular line access and mid-axillary line access. Strap-on (wearable) puncture units facilitates hybrid training sessions with simulated patients.

FEATURES

- 1 | Palpable ribs
- 2 | Realistic needle-tip insertion and resistance
- 3 | Strap-on units to practice patient positioning and communication
- 4 | Two sites for access: right mid-scapular line and left mid-axillary line
- 5 | Volume of pleural effusion can be controlled to set different levels of difficulty.
- 6 | Body torso for independent training. (Only for MW4)



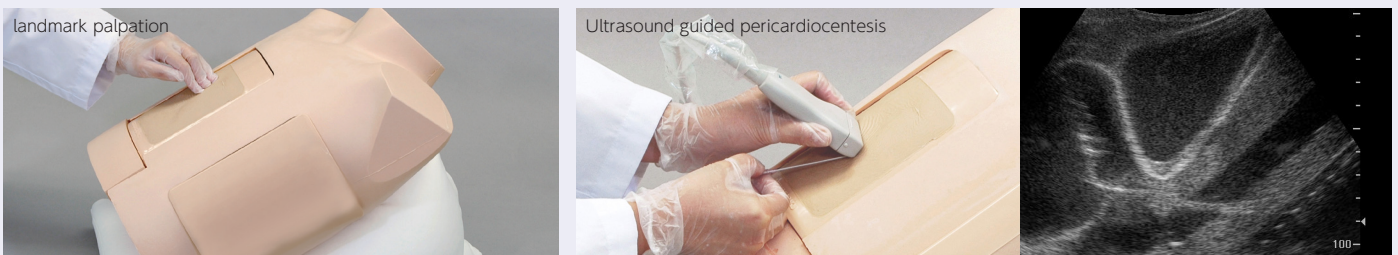
Pericardiocentesis

Practice patient safety during pericardiocentesis with ultrasound guidance

This simulator allows trainees to insert the needle under ultrasound guidance, pierce the "pericardial sac" and aspirate pericardial fluid.

FEATURES

- 1 | Durable and replaceable puncture pad
- 2 | Practice both the subxiphoid approach and parasternal approach through palpable and ultrasonic landmarks.
- 3 | Realistic needle tip sensation during puncture of the "pericardial sac"



Identification of "Larrey's point" (left xiphisternal junction) for needle insertion.

Inserting needle to the pericardial space with ultrasound guidance Ventricles, ribs, pericardium, liver and main artery can be visualized.

DESCRIPTIONS

SPECIFICATIONS

Torso size: W38 x D25 x H48 cm/ 15 x 9.9 x 18.9 inch
Pad size: W16 x D7 x H21 cm/ 6.3 x 2.76 x 8.3 inch
Pad size: W16 x D14 x H21 cm/ 6.3 x 5.6 x 8.3 inch

MATERIALS

Soft resin, hard resin
Latex free

REPLACEMENT PARTS

11383-010 puncture pad
11383-020 mid-scapular line unit puncture pads
11383-030 replacement lung
11394-010 pad for MW15

RECOMMENDED DEVICES

Thoracentesis: 22 G/ 23 G needle
Pericardiocentesis: 18 G needle