



TruNerveBlock

Product Code: **TNB100** (US Plug Voltage) or **TNB101** (UK/Europe Plug Voltage)

TruNerveBlock weight: 1.8kg

TruNerveBlock dimensions: 35 x 15 x 11cm

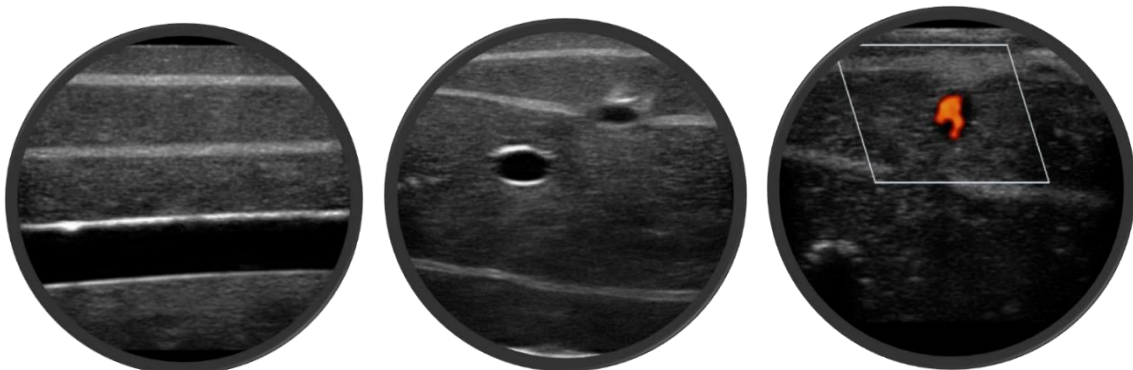
Full shipment weight: 5kg

Full shipment dimensions: 40 x 24 x 22cm

Part of the TruUltra product range, the [TruNerveBlock](#) is a regional anaesthesia ultrasound training model. This 3-in-1 model provides users with hands-on training in:

- ✓ **Ultrasound-guided nerve blocks** with ability to verify needle tip location
- ✓ **Ultrasound IV insertion** with embedded vessels & realistic blood flashback
- ✓ **Ultrasound bone imaging** featuring a fractured bone structure

TruNerveBlock is ideal for emergency medicine, radiology, surgical training programs, ultrasound training programs, simulation centres, medical education facilities, and ultrasound manufacturers for ultrasound education and demonstrations.



Ideal for training in...

- **Intravenous (IV) Cannulation Techniques**

- Features two embedded vessels – small/large and shallow/deep
- Realistic blood flashback upon successful entry into the vessels
- Lifelike vascular ‘tenting’ upon successful entry into the vessel
- Colour doppler detection of bloodflow

- **Regional Anaesthesia**

- Practice probe positioning and movement, recognition of arterial and vein vessels and nerves in soft responsive tissue
- Use ultrasound to target a nerve and inject simulated anaesthetics with visual air and fluid retention

- **Bone Fracture Detection**

- An acoustic shadow artefact in the hypoechoic region deep to a hyperechoic bone outline
- Fracture assessment detection of a fracture and diagnosing bone stress injury

Features and benefits...

- **Realistic:** Contains epidermal layer, two simulated vessels, a nerve bundle (with surrounding artery and vein as reference points), a fractured bone and fascia layers
- **Lifelike training:** Achieve realistic blood flashback and lifelike vascular ‘tenting’ upon successful entry into the vessels. Lifelike needle tip identification and artefact
- **Versatile:** Longitudinal and transverse anatomical viewing options
- **Quick Set-Up:** Initial set-up time is less than 5 mins
- **Durable:** Unique, self-regenerating TruUltra materials diminish the appearance of needle tracks to facilitate a high volume of repeated practice. The insert will facilitate approx. 1000 needle penetrations
- **Interchangeable:** Replacement insert is cost-effective and can be replaced quickly when required
- **Transportable:** Delivered in a durable carry case for easy transportation and safe storage
- **Universal:** Compatible with all Ultrasound machine brands

Package Contents...

- 1 TruNerveBlock model (TNB100 or TNB101)
- 1 TruCorp carry case
- 1 USB pen drive containing product user manual
- 2x 250ml bottles of TruUltra Gel (TNGEL100)
- 2x 250ml concentrated blood (CVB250)
- 1 universal plug adapter
- 2 luerlock syringes and adapters

