

US-14a **Ultrasound Neonatal Head Phantom (Normal Type)**

NEW

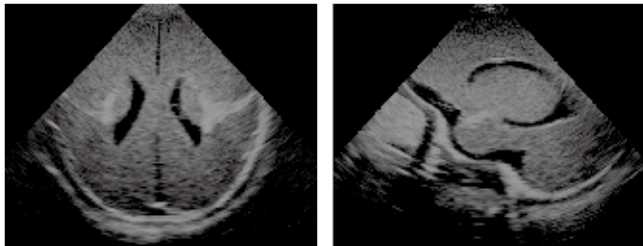


World's First Ultrasound Neonatal Head Phantom

Cranial or head ultrasound is one of most difficult scanning skills, and trainees have few opportunities for training. This head model features an accurate depiction of a newborn's cerebral anatomy, and facilitates a realistic user experience with its life-like soft touch.

Training Skills

- Scanning of brain anatomy in Sagittal (Angled Parasagittal), Coronal and Transverse planes via any fontanel.



Anatomy

- Skull
- Anterior fontanel, Posterior fontanel
- Cerebrum
- Cerebellum
- Brain-stem
- Lateral ventricle
- Ventricle
- Third cerebroventricle
- Fourth ventricle
- Septum lucidum

Specifications :

Set Includes:	Manikin Size:
1 ultrasound phantom	W5.1 x D5.1 x H6.7 inch
1 storage case	
1 instruction manual	

US-14b **Ultrasound Neonatal Head Phantom (Abnormal Type)**

NEW

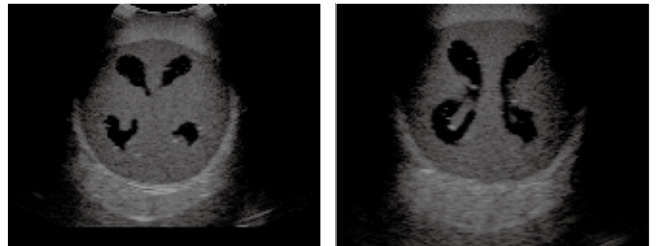


World's First Ultrasound Neonatal Head Phantom with Hydrocephalus

This head phantom is designed to demonstrate abnormal anatomy, such as Hydrocephalus, the shape of the skull is altered due to intracranial pressure.

Training Skills

- Scanning of brain anatomy in Sagittal (Angled Parasagittal), Coronal and Transverse planes via any fontanel.



Anatomy

- Skull
- Anterior fontanel, Posterior fontanel
- Hypertrophied lateral ventricle

Specifications :

Set Includes:	Manikin Size:
1 ultrasound phantom	W5.1 x D5.5 x H7.8 inch
1 storage case	
1 instruction manual	