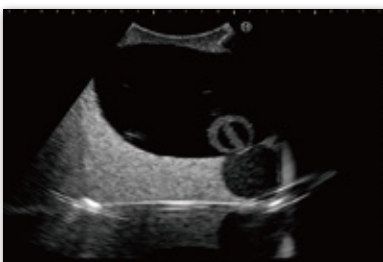
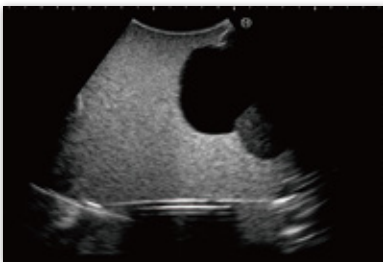
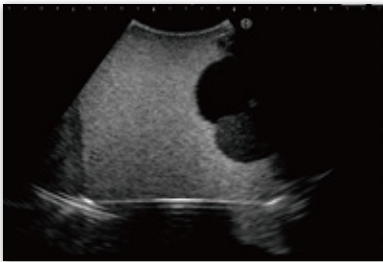


NEW
RELEASE

Intravesical Urine Volume Measurement Training Simulator

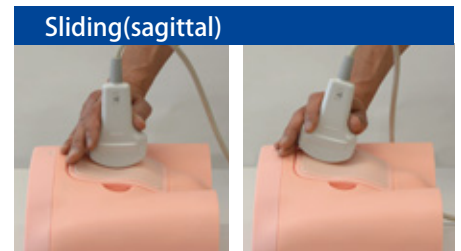
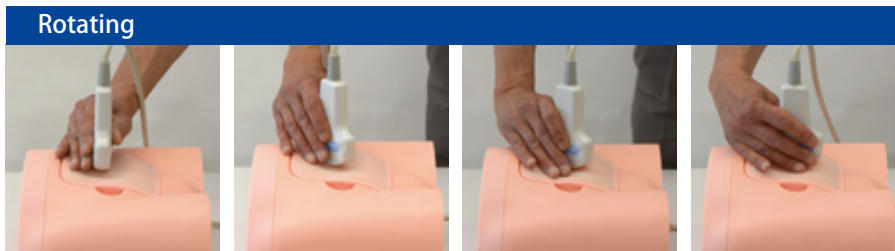
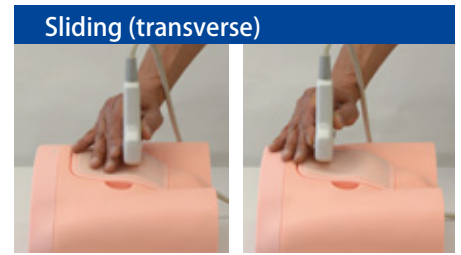
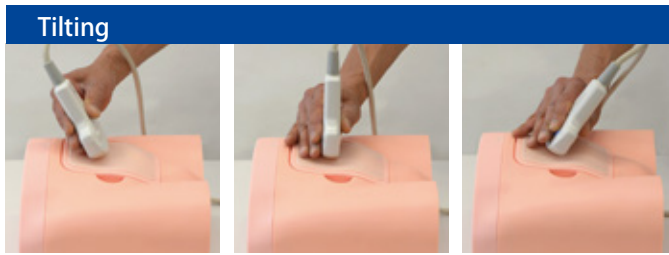
US-16



Pocket-sized ultrasound is becoming popular and start to be utilized in adult day care to check intravesical urine volume instead of catheterization which may cause urinary infection.

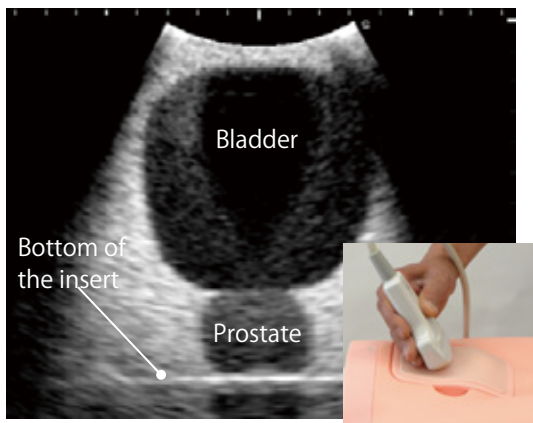
Training Skills

○ Handling and manipulation of transducers on bladder ultrasound

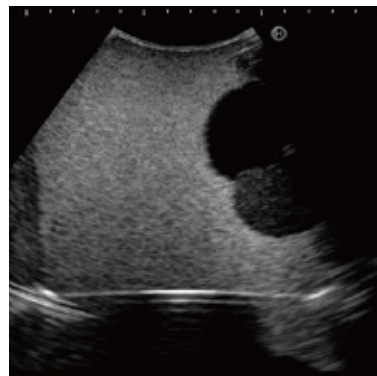


○ Scanning the bladder to measure urine volume and findings.

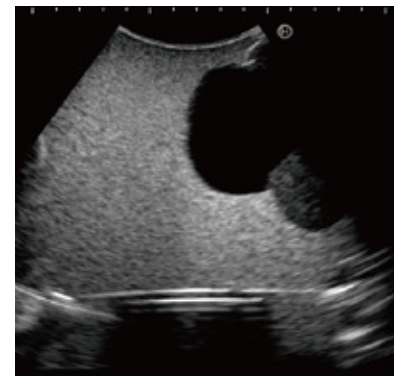
4 variations of interchangeable inserts feature different patient scenarios.



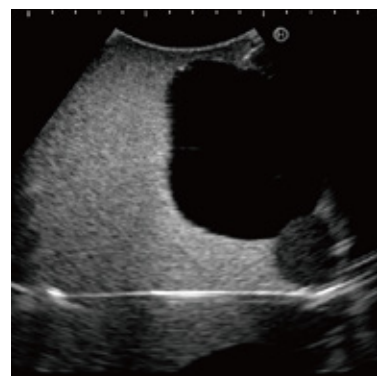
Urine volume **50mL**



Urine volume **150mL**



Urine volume **300mL**



(Urinary retention + balloon catheter)

